

Major and (Parallel) Minor Scales

**practice variety of articulations for each scale type (legato, stacatto, etc.)*

C major

A natural minor

A harmonic minor

A melodic minor

F major

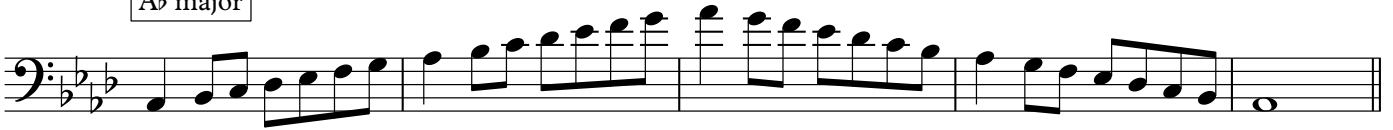
D natural minor

D harmonic minor

D melodic minor

Major and Minor Scales

A \flat major



F natural minor



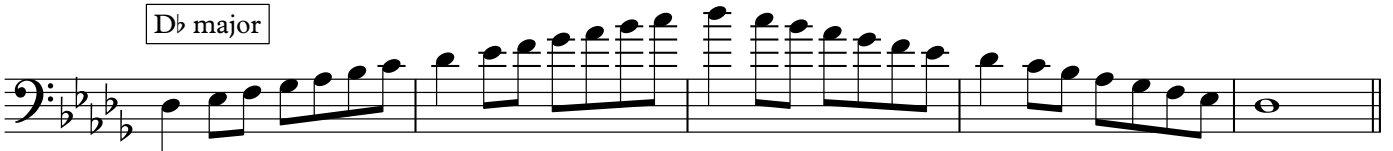
F harmonic minor



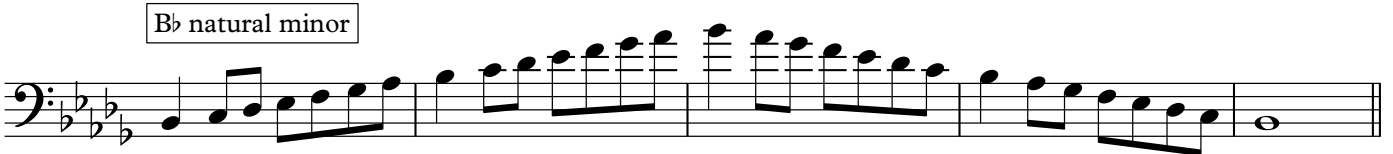
F melodic minor



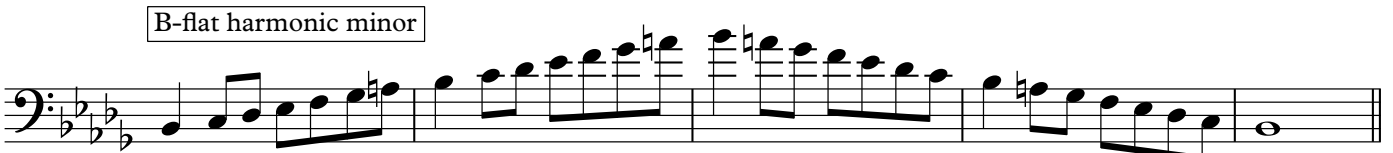
D \flat major



B \flat natural minor



B-flat harmonic minor



B \flat melodic minor



Major and Minor Scales

4

G \flat major



E \flat natural minor



E \flat harmonic minor



E \flat melodic minor



C \flat major



A \flat natural minor



A \flat harmonic minor



A \flat melodic minor



G major

Musical notation for the G major scale in bass clef. The scale starts on G2 and ends on G3. The notes are G, A, B, C, D, E, F#, G. The notation shows an ascending and descending sequence of eighth notes.

E natural minor

Musical notation for the E natural minor scale in bass clef. The scale starts on E2 and ends on E3. The notes are E, F, G, A, B, C, D, E. The notation shows an ascending and descending sequence of eighth notes.

E harmonic minor

Musical notation for the E harmonic minor scale in bass clef. The scale starts on E2 and ends on E3. The notes are E, F, G, A, B, C, D#, E. The notation shows an ascending and descending sequence of eighth notes.

E melodic minor

Musical notation for the E melodic minor scale in bass clef. The scale starts on E2 and ends on E3. The notes are E, F, G, A, B, C#, D, E. The notation shows an ascending and descending sequence of eighth notes.

D major

Musical notation for the D major scale in bass clef. The scale starts on D2 and ends on D3. The notes are D, E, F#, G, A, B, C, D. The notation shows an ascending and descending sequence of eighth notes.

B natural minor

Musical notation for the B natural minor scale in bass clef. The scale starts on B2 and ends on B3. The notes are B, C, D, E, F, G, A, B. The notation shows an ascending and descending sequence of eighth notes.

B harmonic minor

Musical notation for the B harmonic minor scale in bass clef. The scale starts on B2 and ends on B3. The notes are B, C, D, E, F, G, A#, B. The notation shows an ascending and descending sequence of eighth notes.

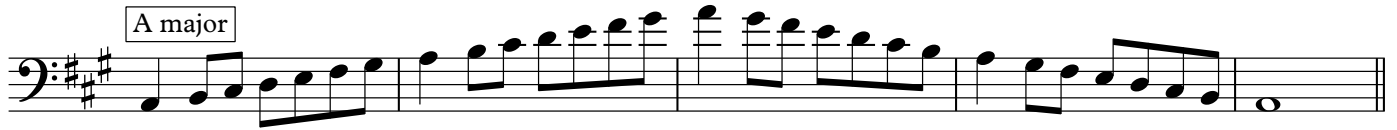
B melodic minor

Musical notation for the B melodic minor scale in bass clef. The scale starts on B2 and ends on B3. The notes are B, C, D, E, F#, G, A, B. The notation shows an ascending and descending sequence of eighth notes.

Major and Minor Scales

6


A major



F# natural minor



F# harmonic minor



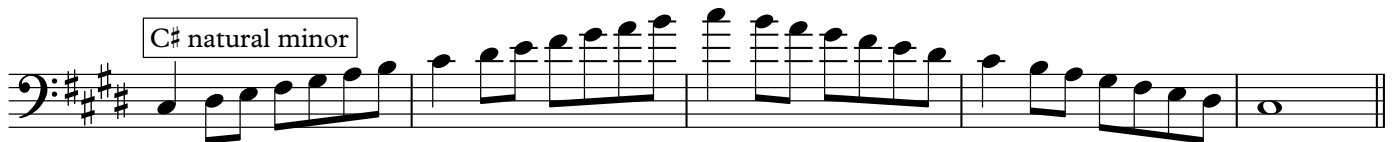
F# melodic minor



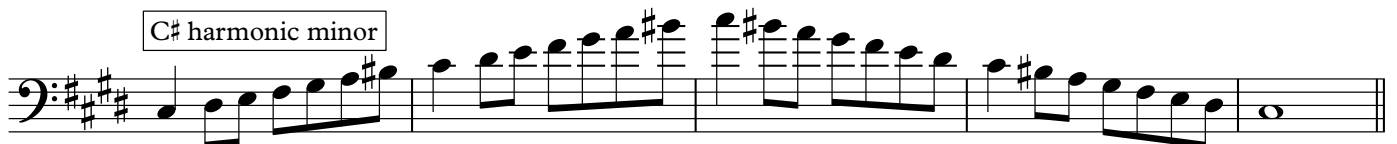
E major



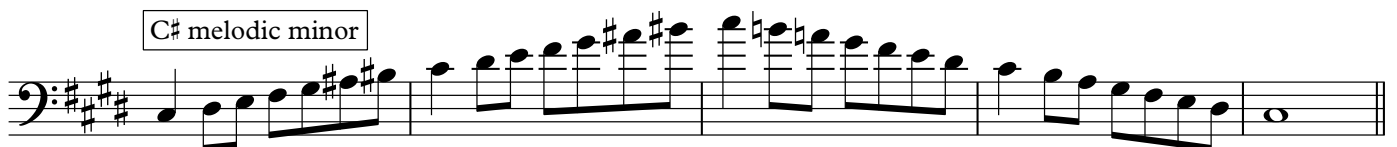
C# natural minor



C# harmonic minor

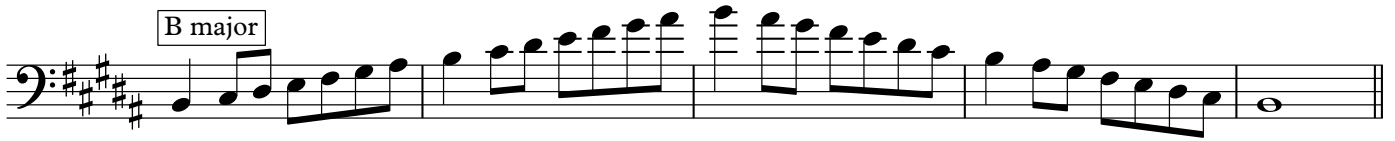


C# melodic minor



Major and Minor Scales

B major



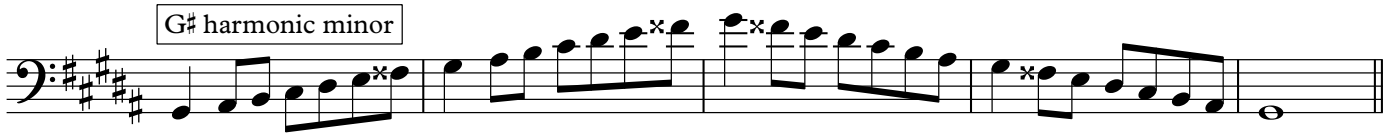
Musical notation for the B major scale in bass clef. The scale is written in a single line, showing the ascending and descending sequences of notes. The key signature has three sharps (F#, C#, G#).

G# natural minor



Musical notation for the G# natural minor scale in bass clef. The scale is written in a single line, showing the ascending and descending sequences of notes. The key signature has three sharps (F#, C#, G#).

G# harmonic minor



Musical notation for the G# harmonic minor scale in bass clef. The scale is written in a single line, showing the ascending and descending sequences of notes. The key signature has three sharps (F#, C#, G#). The seventh degree (F#) is raised in the ascending and descending forms, marked with an asterisk (*).

G# melodic minor



Musical notation for the G# melodic minor scale in bass clef. The scale is written in a single line, showing the ascending and descending sequences of notes. The key signature has three sharps (F#, C#, G#). The sixth (E) and seventh (F#) degrees are raised in the ascending form, marked with asterisks (*).

F# major



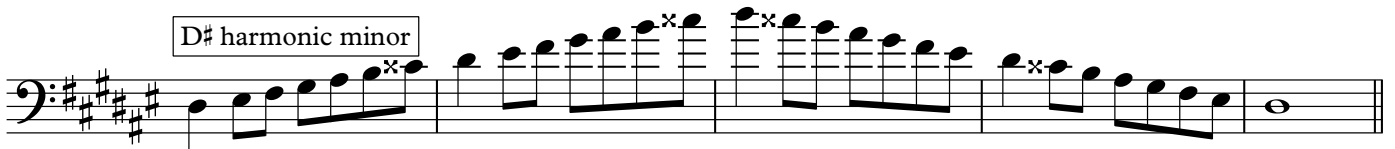
Musical notation for the F# major scale in bass clef. The scale is written in a single line, showing the ascending and descending sequences of notes. The key signature has four sharps (F#, C#, G#, D#).

D# natural minor



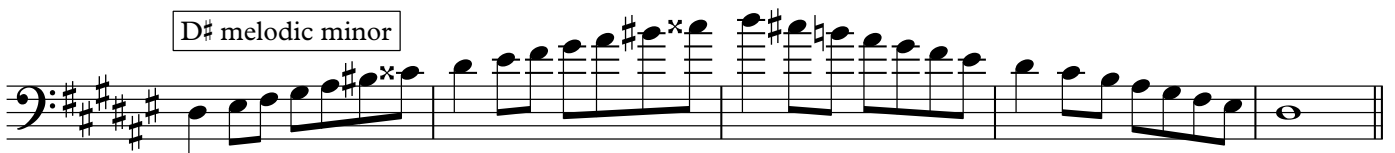
Musical notation for the D# natural minor scale in bass clef. The scale is written in a single line, showing the ascending and descending sequences of notes. The key signature has four sharps (F#, C#, G#, D#).

D# harmonic minor



Musical notation for the D# harmonic minor scale in bass clef. The scale is written in a single line, showing the ascending and descending sequences of notes. The key signature has four sharps (F#, C#, G#, D#). The seventh degree (C#) is raised in the ascending and descending forms, marked with an asterisk (*).

D# melodic minor

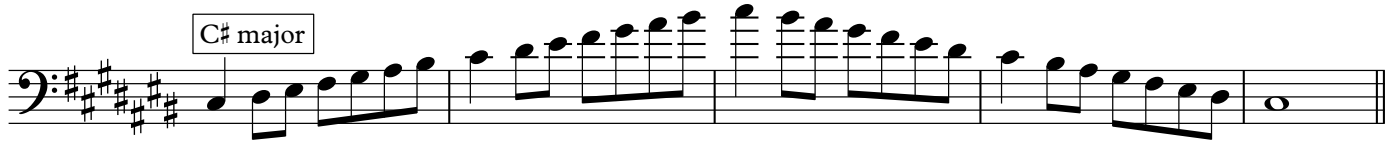


Musical notation for the D# melodic minor scale in bass clef. The scale is written in a single line, showing the ascending and descending sequences of notes. The key signature has four sharps (F#, C#, G#, D#). The sixth (B) and seventh (C#) degrees are raised in the ascending form, marked with asterisks (*).

Major and Minor Scales

8

C# major



A musical staff in bass clef with a key signature of three sharps (F#, C#, G#). The scale is written in eighth notes, ascending and then descending. The notes are: C#2, D#2, E#2, F#2, G#2, A#2, B#2, C#3, D#3, E#3, F#3, G#3, A#3, B#3, C#4, D#4, E#4, F#4, G#4, A#4, B#4, C#5, D#5, E#5, F#5, G#5, A#5, B#5, C#6, D#6, E#6, F#6, G#6, A#6, B#6, C#7, D#7, E#7, F#7, G#7, A#7, B#7, C#8.

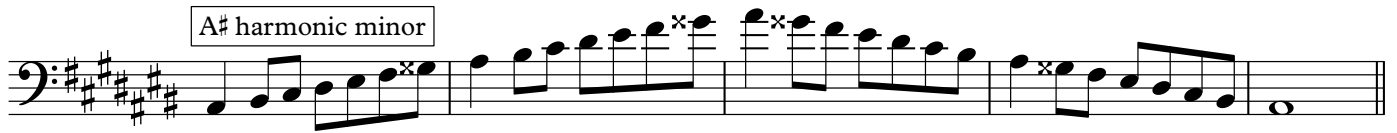
A# natural minor



A musical staff in bass clef with a key signature of three sharps (F#, C#, G#). The scale is written in eighth notes, ascending and then descending. The notes are: A#2, B#2, C#3, D#3, E#3, F#3, G#3, A#3, B#3, C#4, D#4, E#4, F#4, G#4, A#4, B#4, C#5, D#5, E#5, F#5, G#5, A#5, B#5, C#6, D#6, E#6, F#6, G#6, A#6, B#6, C#7, D#7, E#7, F#7, G#7, A#7, B#7, C#8.

× = double sharp (two half-steps higher)

A# harmonic minor



A musical staff in bass clef with a key signature of three sharps (F#, C#, G#). The scale is written in eighth notes, ascending and then descending. The notes are: A#2, B#2, C#3, D#3, E#3, F#3, G#3, A#3, B#3, C#4, D#4, E#4, F#4, G#4, A#4, B#4, C#5, D#5, E#5, F#5, G#5, A#5, B#5, C#6, D#6, E#6, F#6, G#6, A#6, B#6, C#7, D#7, E#7, F#7, G#7, A#7, B#7, C#8.

A# melodic minor



A musical staff in bass clef with a key signature of three sharps (F#, C#, G#). The scale is written in eighth notes, ascending and then descending. The notes are: A#2, B#2, C#3, D#3, E#3, F#3, G#3, A#3, B#3, C#4, D#4, E#4, F#4, G#4, A#4, B#4, C#5, D#5, E#5, F#5, G#5, A#5, B#5, C#6, D#6, E#6, F#6, G#6, A#6, B#6, C#7, D#7, E#7, F#7, G#7, A#7, B#7, C#8.